

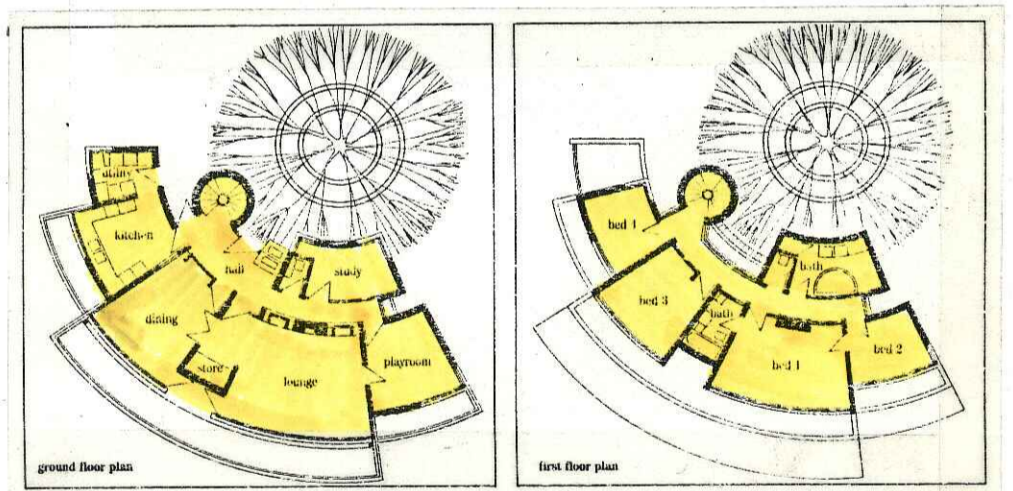
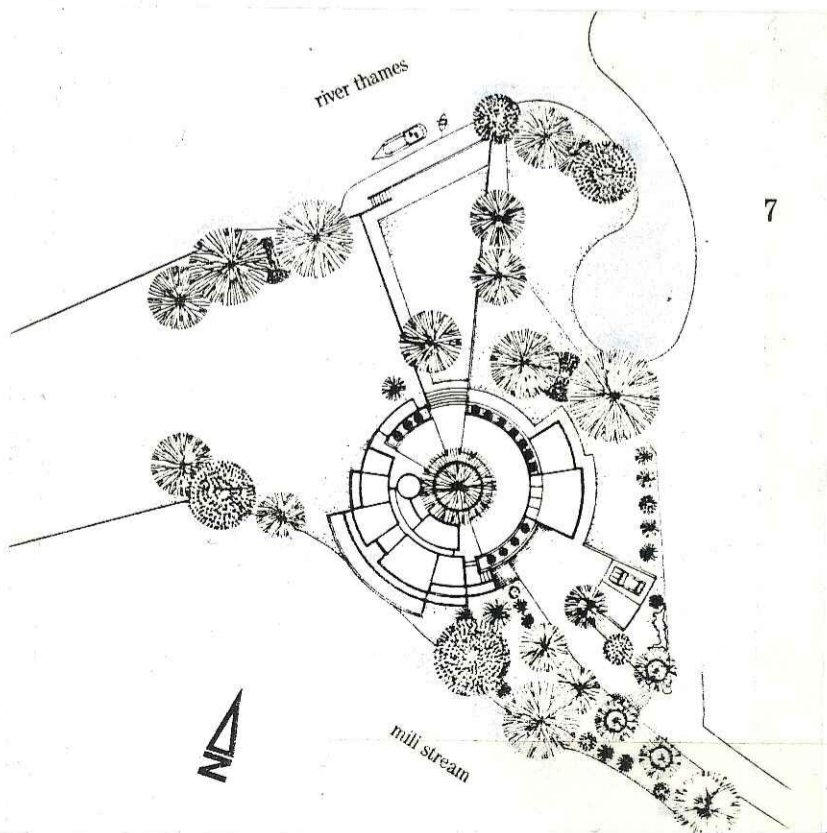
Windsor MILLRUN

IDEAL HOMES FEATURED HOUSE
DOMESTIC RIVERSIDE RESIDENCE

MILLRUN

Millrun is a private house designed as both a family home and an exciting place in which to live. It is located on an island by the River Thames just beyond Windsor. The radial concept is centred around a magnificent lime tree. The major feature on this unique site with its superb southerly views over the quiet back water of the mill stream.

The problem of the occasional flooding has been overcome by raising the house by half a floor level. This creates elevated views, the interesting hard and soft landscaping is an integral part of the concept.



The single aspect of the southerly orientation of all the rooms maximises the benefits of the sun and outlook. The ground floor balconies to the lounge and dining room cantilever out over the water towards the waterfalls of the neighbouring mill.

The red stock facing brick cavity walls are used externally throughout the scheme, this natural brick finish continues into parts of the interior of the house and has a strong influence on the warm colour. The quality of the construction is a distinctive feature of the house.

The out buildings and garage complete the enclosure of the upper level courtyard continuing this circular concept.